

PART OF N.E. 1/4 SEC. 36, T.8 N., R. 2 E. & N.W. 1/4 SEC. 31, T.8 N., R. 3 E. S. L. B. & M.

68

# SUNRIDGE HIGHLANDS NO 1

LOTS 27 to 35  
IN WEBER COUNTY

PREFIX 23-068

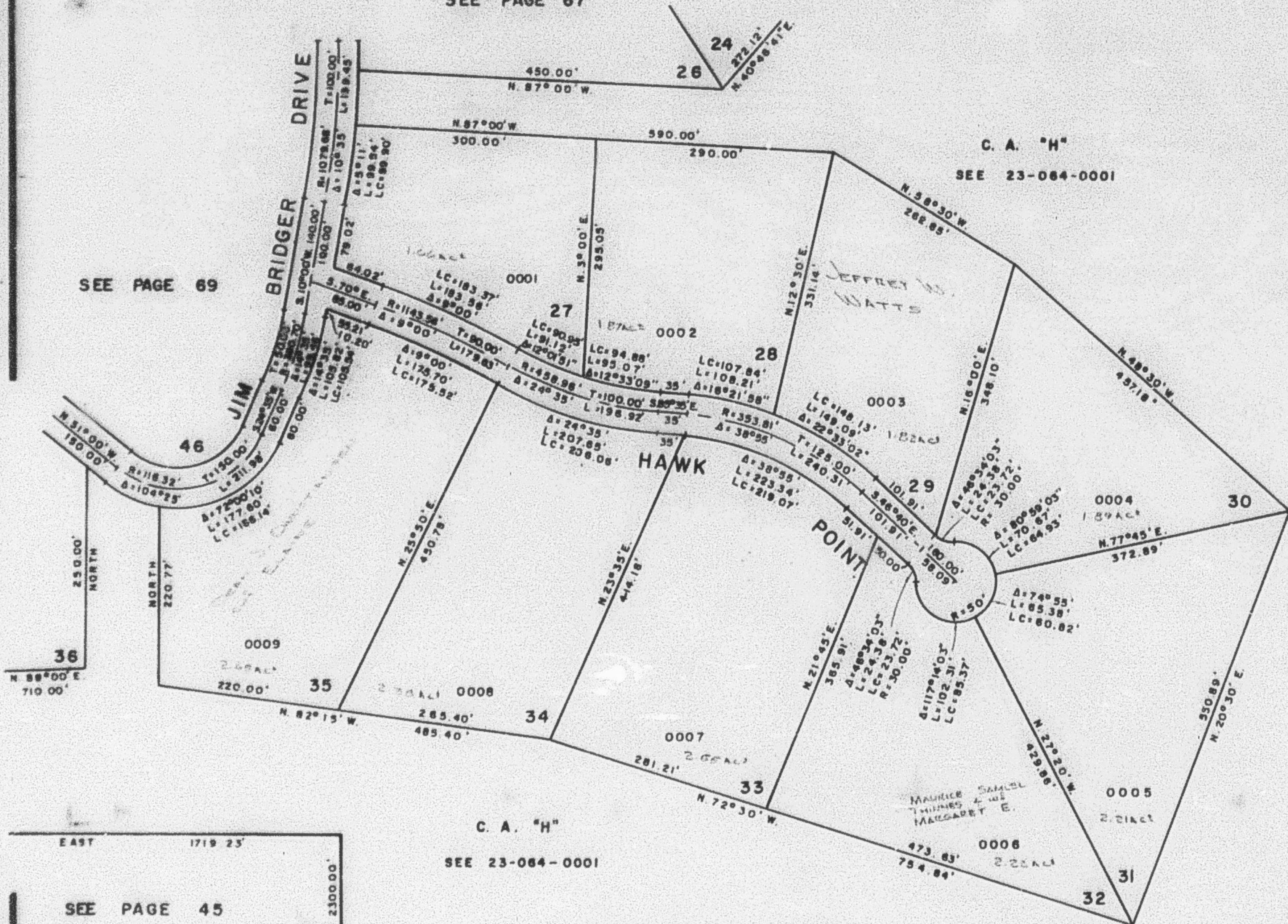
TAXING UNIT 58

SCALE 1"=100'

EXCEPT WHERE OTHERWISE SHOWN  
ALL LOTS OWNED BY  
SUNRIDGE, INC.

SEE PAGE 67

SEE PAGE 69



EAST 1719.25'  
SOUTH 2300.00'

SEE PAGE 45  
OR SEE 23-064-0005

C. A. "H"  
SEE 23-064-0001

MIDDLE FORK DRIVE IS A COUNTY ROAD  
WITH A 66' RIGHT OF WAY. ALL OTHER  
ROADS ARE PRIVATE AND HAVE 50'  
RIGHT OF WAYS.

FOR COMPLETE ENG DATA SEE ORIG  
DED PLAT IN BOOK 18, PAGES 97-99  
FOR ALL COMMON AREAS SEE PAGE 64